

eraslan
metal

Sanhan
METAL



sahin
METAL



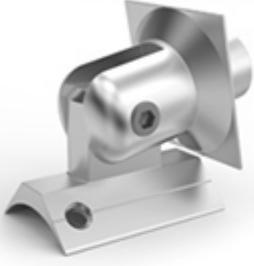
Konya ve İzmir Bölgelerinde faaliyet gösteren Şahin Metal Türkiye'nin önde gelen alüminyum korkuluk aksesuarları üreticilerinden birisidir. Alüminyum korkuluk aksesuarları üretimi ve montajı konularında faaliyet gösteren firmamız, profesyonel ekibi ile kaliteden ödün vermeyerek müşteri memnuniyetini en üst seviyeye çıkarmayı hedeflemektedir.

Müşterilerimizin aksesuar ihtiyacını kaliteye ulaşabilmeleri için ileri teknoloji teknikler ile birleştirerek sunuyoruz. Yeni ve özel ürünleri hızlı ve ekonomik maliyetlerle gerçekleştirerek nihai ürün tedarikine geçebiliyoruz.

Günlük operasyonlarımızda sürdürülebilirlik, ürün güvenliği ve çevrenin korunması temel ilkelerimizdir. Müşterilerimizin beklentilerini karşılamak üzere kalite güvence ve kontrolünde uluslararası standartların gereklerini tavizsiz uygulamaktayız.

er **aslan**
metal





S1001
40x40 Kare Mafsals Takımı
40x40 Square Assembled Fitting



S1002
40x40 Kare Sabit Mafsals
40x40 Square Fixed Fitting



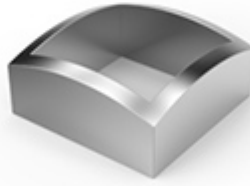
S1003
40x25 Kare Sabit Mafsals
40x25 Square Fixed Fitting



S1004
40x25 Kare Mafsals Takımı
40x25 Square Assembled Fitting



S1005
40° lık Kare Yer Flanşı Tırnaksız
40° Square Sheet Bottom Flange Unquoted



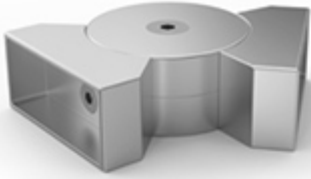
S1006
40x40 Kare Yer Flanşı (4,5 mm)
40x40 Square Bottom Flange (4,5 mm)



S1007
40x25 Dikme Flanşı
40x25 Pillar Flange



S1008
60x25 Açılı Dirsek
60x25 Elbow Angle



S1009
60x25 Hareketli Dirsek
60x25 Moving Elbow



S1010
60x25 45° Dirsek
60x25 45° Elbow



S1011
60x25 90° Dirsek
60x25 90° Elbow



S1012
60x25 Ortadan Kanallı Duvar Flanşı
60x25 Middle Channel Wall Flange



S1013
60x25 Duvar Flanşı İçten Delikli
60x25 Wall Flange Internal Casing



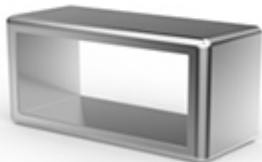
S1014
60x25 Dıştan Vidalı Duvar Flanşı
60x25 Wall Flange Outer Casing



S1015
60x25 Tapa Dışa Geçme
60x25 Plug Outer Connect



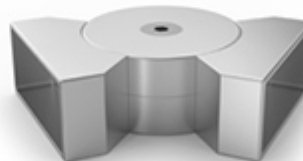
S1016
60x25 Tapa İçe Geçme
60x25 Overlap Plug



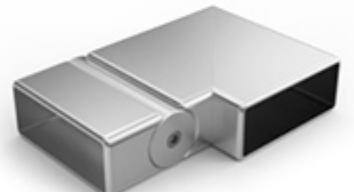
S1017
60x25 Bilezik
60x25 Bangle



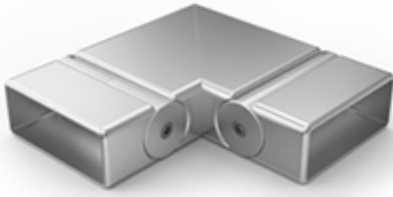
S1018
80x30 Açılı Dirsek
80x30 Elbow Angle



S1019
80x30 90° Hareketli Dirsek
80x30 90° Moving Elbow



S1020
80x30 45° - 90° Dirsek
80x30 45° - 90° Elbow



S1021
80x30 45° - 90° - 45° Dirsek
80x30 45° - 90° - 45° Elbow



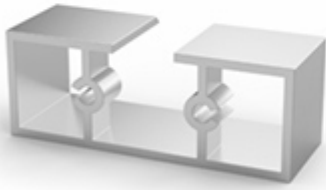
S1022
80x30 Dirsek 90°
80x30 Elbow 90°



S1023
80x30 Dirsek 45°
80x30 Elbow 45°



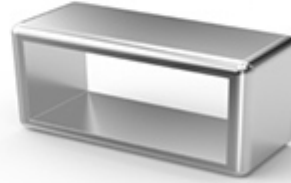
S1024
80x30 Dıştan Vidalı Duvar Flanşı
80x30 External Screw Wall Flange



S1025
80x30 Ortadan Kanallı Duvar Flanşı
80x30 Middle Channel Wall Flange



S1026
80x30 Duvar Flanşı İçten Delikli
80x30 Wall Flange Internal Casing



S1027
80x30 Bilezik
80x30 Bangle



S1028
80x30 Tapa Dışa Geçme
80x30 Plug Outer Connect



S1029
80x30 Tapa İç Geçme
80x30 Overlap Plug



S1030
14x14 Küre Dirsek İç Geçme
14x14 Globe Inside Elbow Pass



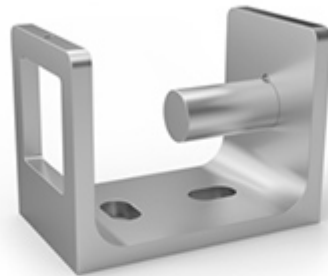
S1031
14x14 Kare Dirsek 90°
14x14 Square Elbow 90°



S1032
14x14 Kare Bilezik
14x14 Square Bangle



S1033
14x14 Kare Tapa
14x14 Square Plug



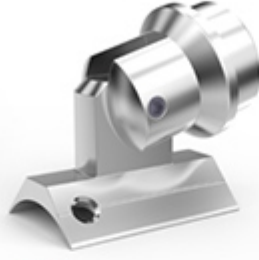
S1034
40x40 Yandan Bağlantı Takımı
40x40 Side Connection Team



S1035
14x14 Boru Tutamağı
14x14 Pipe Handle



S1037
35° lik Mafsal Takımı 4 Alyan
35° Assembled Fitting



S1038
35° lik Mafsal Takımı 3 Alyan
35° Assembled Fitting



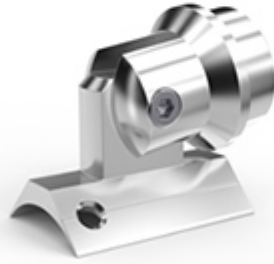
S1039
35° lik Sabit Mafsal
35° Fixed Fitting



S1040
40° lik Mafsal Takımı
40° Assembled Fitting



S1041
40° lik Sabit Mafsal
40° Fixed Fitting



S1042
50° lik Mafsal Takımı
50° Assembled Fitting



S1043
50° lik Mafsal Takımı Boş
50° Assembled Fitting Empty



S1044
50x50 Kurtağzı
50° Dovetail



S1045
35° lik Ayak
35° Stand



S1046
35° lik Boş Ayak
35° Stand Empty



S1047
40° lik Yer Flanşı Tek Tırnak
40° Pillar Flange Single Quotation



S1048
50° lik Ayak
50° Stand



S1049
35° lik Yuvalı Ayak
35° Slot Stand



S1050
50° lik Duvar Flanşı Tek Delikli
50° Wall Flange Single Screw



S1051
50° lik Duvar Flanşı Çift Delikli
50° Wall Flange Double Screw



S1052
50° lik Dıştan Vidalı Duvar Flanşı
50° External Screw Wall Flange



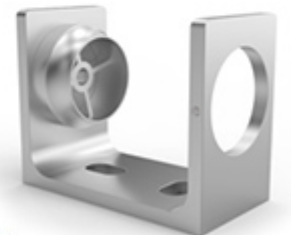
S1053
50° lik Dekorlu Saç Flanş
50° Decorative Sheet Flange



S1054
Dekorlu Flanş
Decorative Flange



S1055
40° lik - 50° lik Duvar Dibi Bağlantısı
40° - 50° Bottom Wall Connection



S1056
35° lik - 40° lik Duvar Yandan Bağlantı Takımı
35° - 40° Side Wall Connection Kit



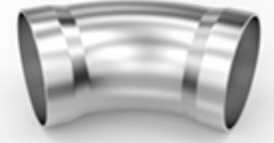
S1057
16' luk - 19' luk 45° Dirsek
16' - 19' 45° Elbow



S1058
16' luk - 19' luk 90° Dirsek
16' - 19' 90° Elbow



S1059
19' luk - 16' luk Küre Topuz Dirsek
19' - 16' Globe Knob Elbow



S1060
50' lik 45° Şişme Dirsek
50' 45° Elbow Swelling



S1061
50' lik 90° Şişme Dirsek
50' 90° Elbow Swelling



S1062
50' lik Ayarlı Yan Dolu Topuz Dirsek
50' Blank Adjustable Bracket Knob



S1063
50' lik Ayarlı Boş Topuz Dirsek
50' Blank Adjustable Bracket Knob



S1064
50' lik Mafsallı Boş Topuz
50' Assembled Empty Knob



S1065
16' lik Tapa
16' Plug



S1066
19' luk Tapa
19' Plug



S1067
35' lik - 40' lik Tapa
35' - 40' Plug



S1068
50' lik Tapa
50' Plug



S1069
16' lik Vida Gizleme Alüminyum
16' Hiding Screw Aluminium



S1070
19' luk Vida Gizleme Alüminyum
19' Hiding Screw Aluminium



S1071
16' lik Vida Gizleme Plastik
16' Hiding Screw Plastic



S1072
19' luk Vida Gizleme Plastik
19' Hiding Screw Plastic



S1073
16' lik Bilezik
16' Bangle



S1074
19' luk Bilezik
19' Bangle



S1075
50' lik Bilezik
50' Bangle



S1076
50' lik Uzun Bilezik
50' Long Bangle



S1077
Cam Klipsi
Glass Holder



S1078
Cam Klipsi Tırnaklı
Glass Holder



S1079
Cam Klipsi Uzun
Glass Holder Long



S1080
Cam Klipsi Fitilli
Glass Holder



S1081
35x35 Kurtağzı
35x35 Dovetail



S1082
35x40 Kurtağzı
35x40 Dovetail



S1083
35x50 Kurtağzı
35x50 Dovetail



S1084
50x35 Pul
50x35 Pul



S1085
L Duvar Bağlantı 90°
L Wall Mount 90°



S1086
L Duvar Bağlantı 135°
L Wall Mount 135°



S1087
L Duvar Bağlantı 90° Uzun
L Wall Mount 90° Long



S1088
Alüminyum Çamaşrılık
Aluminium Laundries



S1089
Ankraj Demiri 20 cm
Anchor Iron 20 cm



S1090
Ankraj Demiri 20 cm Boş
Anchor Iron 20 cm Empty



S1091
M8 Gijon 100 cm
M8 Gijon 100 cm



S1092
Kimyasal Dubel 410 mg
Chemical Anchors 410 mg



S1093
Alüminyum Mentеше
Aluminium Hinge



S1094
Alüminyum Sürgü
Aluminium Sliding



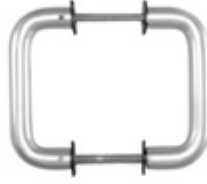
S1095
19' luk Boru Bükme Makinası
19' Electrical Pipe Bender



S1096
50' lik Boru Bükme Makinası
50' Electrical Pipe Bender



S1097
D Kol
D Handle



S1098
Mini U Kol Takımı
Pull Door Handle Mini U Type



S1099
Yay Kol
Bow Pull Door Handle



S1100
H Kol
Pull Door Handle H Type



S1111
Kıvrık Kol
Pull Door Curved Handle



S1112
Lama Bant Kol
Lama Stripe Handle



S1113
Aldoks Kilit Karşılığı Dilli Makaralı
Aldoks Striker



S1114
Sistem Kilit Karşılığı Dilli Makaralı
System Striker



S1115
C60 Kilit Karşılığı Dilli Makaralı
C60 Striker



S1116
Aldoks Menteşe
Aldoks Hinge



S1117
C60 Menteşe
System Window Hinge



S1118
Kapazlama Menteşe
System Door Hinge



S1119
Fişek Sürgü
Latch



S1120
Aldoks Gömme Sürgü
Aldoks Latch



S1121
Sistem Kısa Sürgü
System Short Latch



S1122
C60 Çiftli Sürgü
C60 Double Latch



S1123
Kapı Altı Firçaları (Alttan) H
Door Brushes (Bottom of the Door)



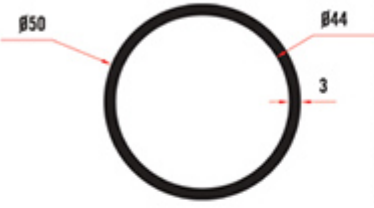
S1124
Kapı Altı Firçaları (Alttan) T
Door Brushes (Bottom of the Door)



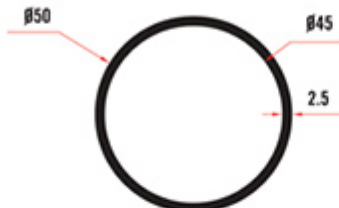
S1125
F Ankrāj Demiri
F Type Moving Anchorage



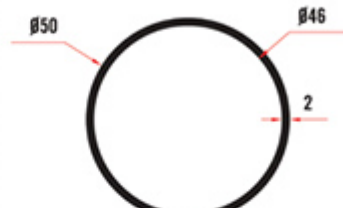
S1126
U Ankrāj Demiri
U Type Moving Anchorage



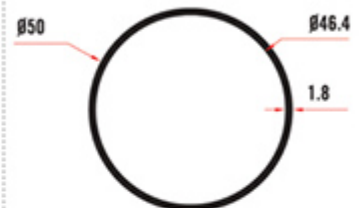
SA01 50x3 mm Profil
1,200 Kg/Mt



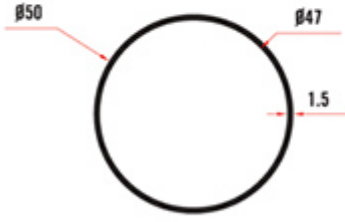
SA02 50x2,5 mm Profil
1,010 Kg/Mt



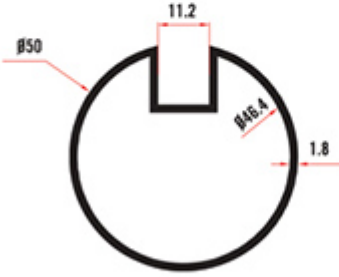
SA03 50x2 mm Profil
0,820 Kg/Mt



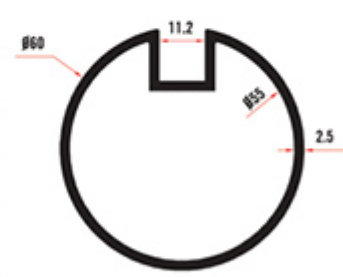
SA04 50x1,8 mm Profil
0,750 Kg/Mt



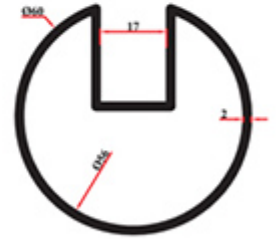
SA05 50x1,5 mm Profil
0,625 Kg/Mt



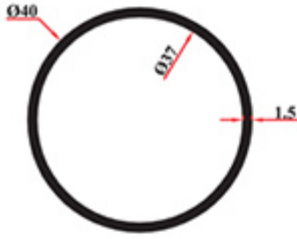
SA06 50x1,8 Tek Kanallı Üst Küpeşte
0,900 Kg/Mt



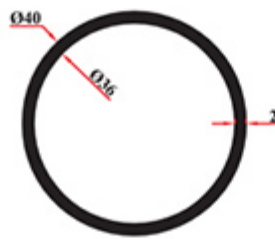
SA07 60x2,5 mm Tek Kanallı Küpeşte
1,400 Kg/Mt



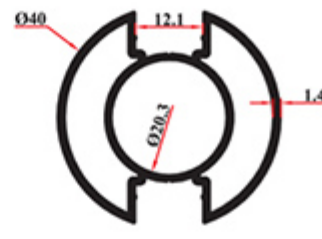
SA08 60'lık Kanallı Boru
1,247 Kg/Mt



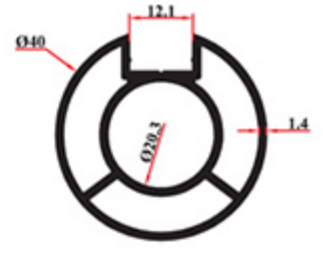
SA11 40x1,5 mm Boru
0,488 Kg/Mt



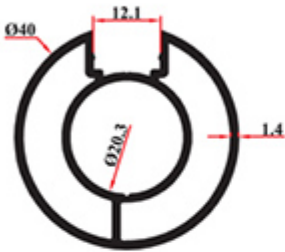
SA12 40x2 mm Boru
0,000 Kg/Mt



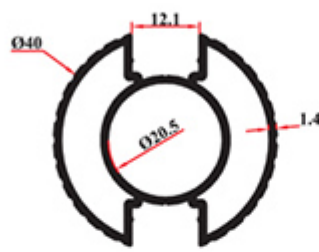
SA13 40'lık Çift Kanallı
0,785 Kg/Mt



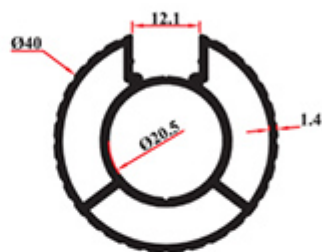
SA14 40'lık Tek Kanallı
0,830 Kg/Mt



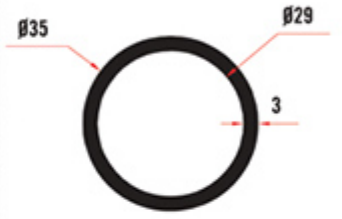
SA15 40'lık Tek Kanallı
0,750 Kg/Mt



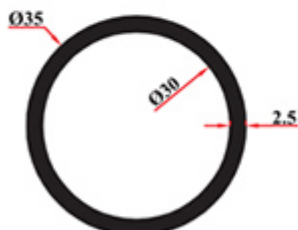
SA16 40'lık Çift Kanallı Tırtırlı
0,730 Kg/Mt



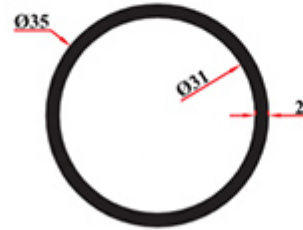
SA17 40'lık Tek Kanallı Tırtırlı
0,801 Kg/Mt



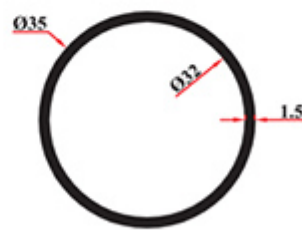
SA18 35x3 mm Profil
0,825 Kg/Mt



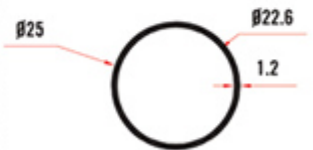
SA19 35x2,5 mm Boru
0,691 Kg/Mt



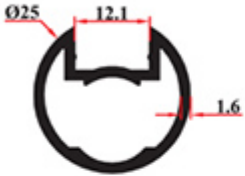
SA20 35x2 mm Boru
0,561 Kg/Mt



SA21 35x1,5 mm Boru
0,426 Kg/Mt

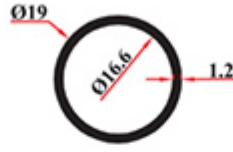


SA23 25x1,2 mm Profil
0,250 Kg/Mt

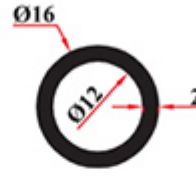


2017 ÇITA

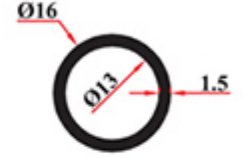
SA24 25'lik Kanallı Boru
0,472 Kg/Mt



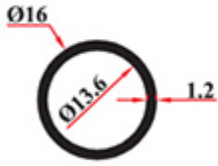
SA25 19x1,2 mm Boru
0,181 Kg/Mt



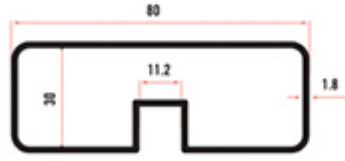
SA26 16x2 mm Boru
0,237 Kg/Mt



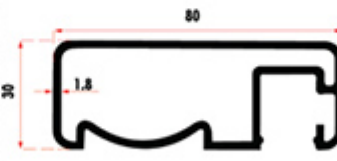
SA27 16x1,5 mm Boru
0,184 Kg/Mt



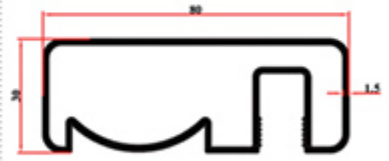
SA28 16x1,2 mm Boru
0,151 Kg/Mt



SA30 80x30 Cam Profil
1,122 Kg/Mt



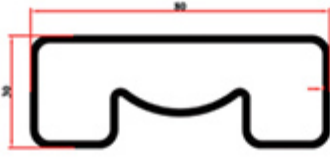
SA31 80x30 Küpeşte Profil
1,240 Kg/Mt



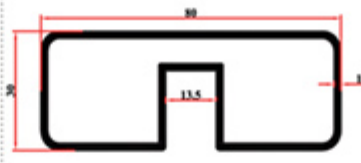
SA32 80x30 Küpeşte Profil
1,110 Kg/Mt



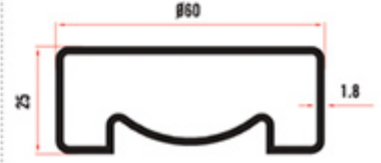
SA33 80x30 Ortadan Kanallı
1,147 Kg/Mt



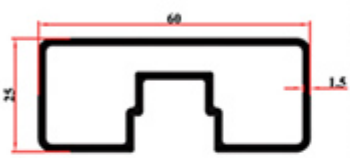
SA34 80x30 Profil
1,150 Kg/Mt



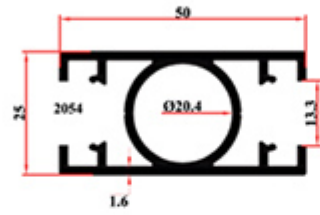
SA35 80x30 Ortadan Kanallı
1,193 Kg/Mt



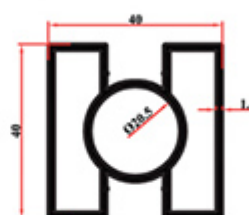
SA36 60x25 Kutu Profil
0,845 Kg/Mt



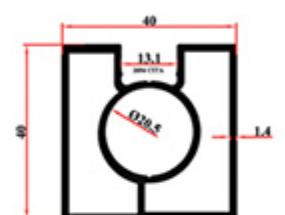
SA37 60x25 Ortadan Kanallı
0,780 Kg/Mt



SA38 50x25 Dikme Profil
0,869 Kg/Mt



SA39 40x40 Çift Kanallı
0,890 Kg/Mt

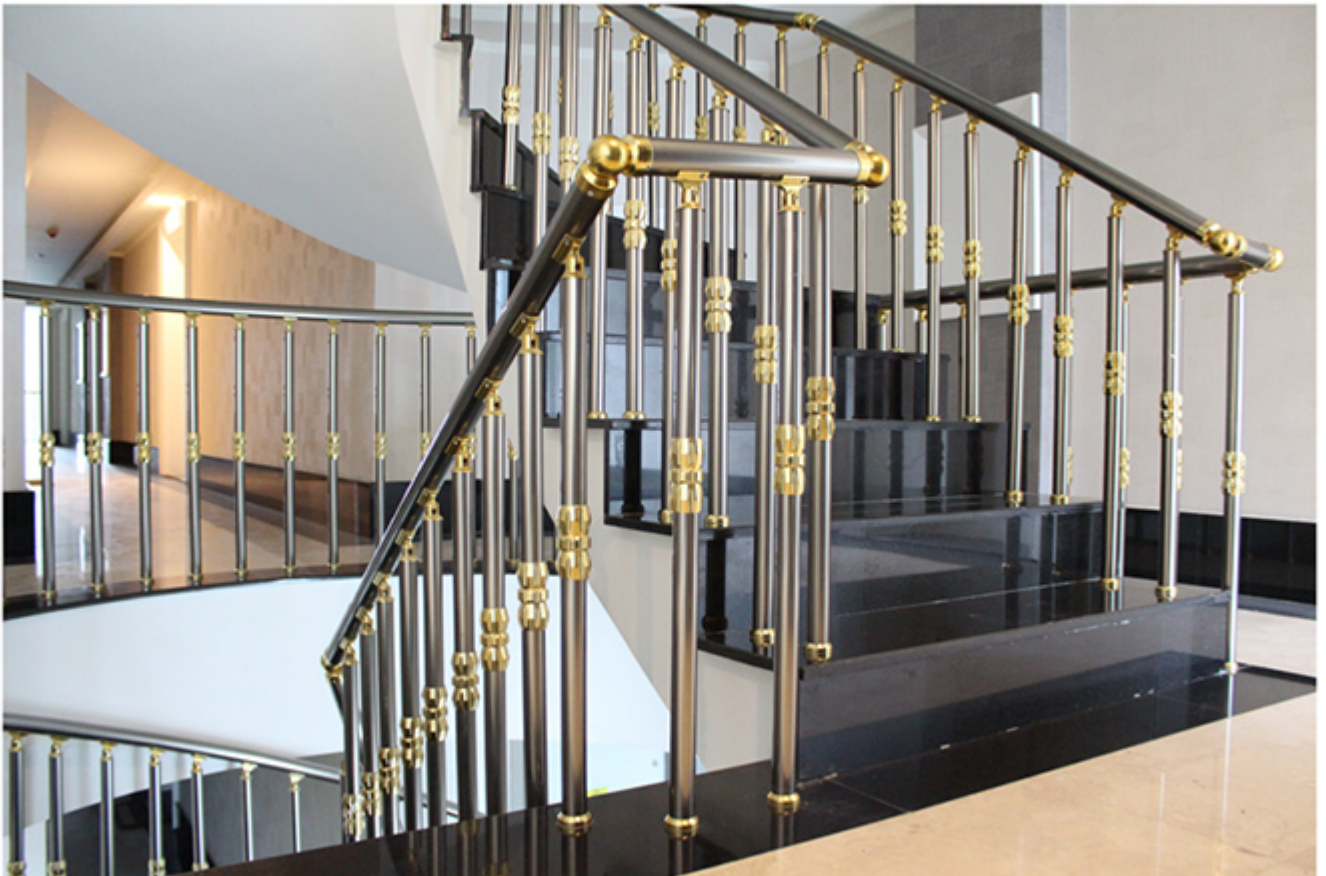


SA40 40x40 Tek Kanallı
0,895 Kg/Mt









sahin
METAL

Fabrika : Tatlıcak Mah. Vatan Sanayi Sitesi İşıldak Sk. No:55/1 Karatay/KONYA
Tel-Fax : +90 332 230 00 34
Gsm : +90 532 558 60 50
E-Posta : info@sahinmetalaluminyum.com - sahinmetalkonya@gmail.com
Web : www.sahinmetalaluminyum.com

eraslan
metal

Şube : Atatürk Mah. İnönü Bulvarı No:7/3 - 11 Tire/İZMİR
Tel : +90 232 500 89 89
Gsm : +90 542 424 26 90



UGR
REKLAM AJANSI
www.ugrajans.com
0332 351 51 96